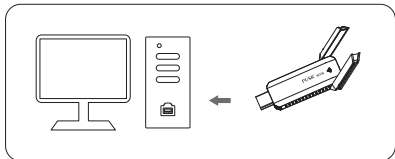


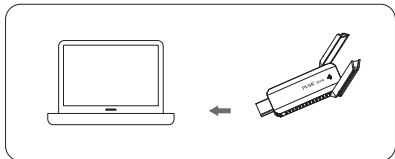
Hardware Installation

Plug the network adapter directly into the USB port of the computer. USB 3.0 is recommended, it will provide a better experience.

Desktop Installation:



Laptop Installation:



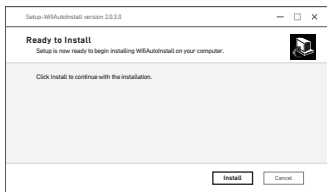
Driver Installation

Note: The driver will be installed automatically when UAX180 is plugged into USB port. You can also download the driver manually. Driver Download Address: <https://www.pusr.com/support/download/driver-UAX180-Driver-Download.html>

- 1 Computer will pop-up the CD driver when the UAX180 is plugged. Double-clicking the CD driver will start the installation.



- 2 Click "Install"



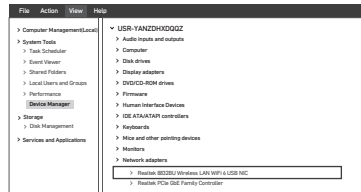
Driver Installation

- 3 Installation finished.



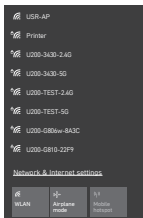
- 4 Please restart the computer after the installation.
- 5 After that you can see the Network Adapter in Device Manager.

Note: In this step, the UAX180 should be plugged into USB port of the computer.

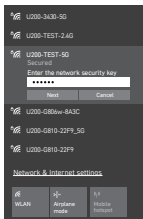


Network Configuration

- ① After driver installation,click the Wi-Fi icon. All wifi networks will be showed.

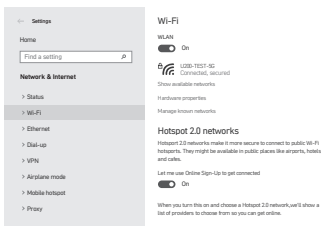


- ② Select the right one and input password, click "Next" to join the network.



Network Configuration

- ③ Open Network & Internet settings,click "Wi-Fi". It will show the available network.



- ④ Click the connected network,it will show the details of the WIFI.



UAX180 Quick Start Guide

